




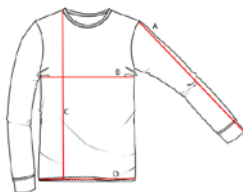


# FCSU-Bestellschein

Artikel	Preis	Größe / Name	Anzahl
<b>FCSU-Hoodie (Kapuzenpullover)</b>  <ul style="list-style-type: none"> <li>• Farbe schwarz mit großem FCSU-Logoaufdruck</li> <li>• Material: 80% Baumwolle, 20% Polyester</li> <li>• Größen: s.u.</li> </ul>	20 €	Größe	
<b>FCSU-Beanie: Mütze mit Spielernamen</b>  <ul style="list-style-type: none"> <li>• Farbe schwarz mit FCSU-Logo und Name (weiß)</li> <li>• Material: 95% Baumwolle, 5% Elasthan</li> <li>• Einheitsgröße</li> </ul>	10 €	Druckname	
<b>FCSU-Becher</b> 	5 €		

## Größen:

Measurements	XXS - 1/2	XS - 3/4	S - 5/6	M - 7/8	L - 9/11	XL - 12/13			
	Years	Years	Years	Years	Years	Years	XS	S	M
1/2 Chest	37cm	39cm	41cm	43cm	46cm	49cm	49cm	51cm	56cm
Body Length	42cm	44cm	48cm	52cm	57cm	62cm	64cm	67cm	70cm
Sleeve Length	35cm	37cm	40cm	43cm	47cm	51cm	57.5cm	59cm	60.5cm



### A - Arm Length

Start at the highest point on the shoulder and measure all the way down - including cuff. Ensure sleeve is laying flat and straight.

### B - Chest

Measure 2.5cm down from armhole and then straight across the chest.

### C - Body Length

Start at the highest point on the shoulder (HPS) and measure straight down including hems.

Datum, Unterschrift: \_\_\_\_\_